



MCN™ Advanced Server Software

Monitoring & Control for Voting Comparator & General Purpose I/O

CTI MCNRCD Remote Comparator Display - Mcdemo

File Edit View Help

Police Fire EMS Service

| East Police | | Central Police | | West Police | | Area Wide | | Command | |
|----------------|------|----------------|---------|----------------|--------|----------------|------|---------------|----|
| Indian Hill | Rx | Williamson Rd. | | Miami Heights | | Indian Hill | | Indian Hill | |
| Williamson Rd. | Vote | Engineers | | Calhoun Hall | Rx | Williamson Rd. | | Comm Center | |
| Glendale W.T. | Rx | Greenhills | | Cheviot | Rx | Glendale W.T. | | Loveland W.T. | |
| Comm Center | Rx | Glendale W.T. | | Comm Center | Rx | Comm Center | | Sweetwine | |
| Loveland W.T. | Rx | Calhoun Hall | | Mt. Echo | Rx | Loveland W.T. | | Greenhills | Tx |
| Sweetwine | Rx | Comm Center | | Miami WW | Rx | Sweetwine | | Engineers | |
| Anderson Twp | | | | Greenhills | Vote | Anderson Twp. | | Calhoun Hall | |
| Greenhills | Rx | | | Cleves | | Greenhills | | Miami Heights | |
| Engineers | Rx | | | Fernald | | Engineers | | Miami WW | |
| Milford | | | | Prov. Hosp. | Rx | Milford | | Cleves | |
| Marionmont | | | | Mt. St. Joesph | Rx | Marionmont | | Miamitown | |
| Calhoun Hall | | | | Engineers | | Calhoun Hall | Rx | Harrison | |
| | | | | Miamitown | Fail | Miami Heights | Rx | | |
| | | | | Harrison | | Cheviot | Rx | | |
| | | | | | | Mt. Echo | Rx | | |
| | | | | | | Miami WW | Vote | | |
| | | | | | | Cleves | | | |
| East Tx | | Microwave | | Generators | | | | | |
| Indian Hill | On | Indian Hill | Normal | Comm Center | Normal | Fernald | | | |
| Comm Center | | Sweetwine | Standby | Indian Hill | Normal | Prov. Hosp. | Rx | | |
| | | | | Miami Hts | Normal | Mt. St. Joesph | Rx | | |
| | | | | Sweetwine | Run | Miamitown | Rx | | |
| | | | | Miami WW | Normal | Harrison | Rx | | |
| | | | | Calhoun Hall | Normal | | | | |

Ready

Introduction

The MCN™ (Monitoring and Control Network) Advanced Server software lets you monitor and control receiver voting system and general purpose inputs & outputs from your console or service shop over IP LANs or WANs. It extends comparator lights and switches and other input/output (I/O) devices to PC displays. The comparator or other equipment may be located remotely, limited only by your WAN connections.

Compatible with the following MCN modules:

- CIB modules for comparators
- AIB modules for ASTRO-TAC comparators
- TIB modules (with CIB modules) for Transmitter Steering
- GPIO Modules for general purpose I/O

It can be used to monitor & control:

- Motorola Digitac, Spectra-TAC, ASTRO-TAC
- JPS SNV-12 Voters
- M/A-Com G.E. Analog Voters
- Doug Hall 4RV/2 Voters
- Generic I/O (Doors, Alarms, Generators, etc.)

Server Overview

The MCN Advanced Server software communicates with I/O modules on the MCN network. It processes status messages (Vote, Receive, Disable, Fail, Door Open, Alarm, etc.) messages from the MCN modules and passes them to the client displays on the LAN or WAN network.

The server accepts control commands (Force-Vote, Disable, Open, Run, Stop, etc.) from the remote clients and sends them on to the modules on the MCN network.

The server supports multiple clients and multiple network interfaces (NIs).

System Configuration

The common system configuration information (Receiver names, Module addresses, channel information, display screen configuration, output functions, etc.) resides in the server and is user-configured with the MCN Config program.

Display screens can be user-defined with various numbers of rows and columns and a number of tabs. Multiple screens can be defined for different users (Police Dispatch, Fire Dispatch, Technicians). Individual client PCs can be limited to specific screens if desired.

CTI Products, Inc.
1211 West Sharon Road
Cincinnati, Ohio 45240
USA

phone
+1.513.595.5900

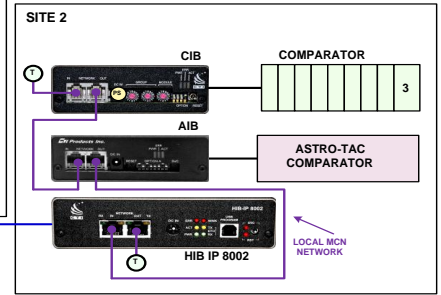
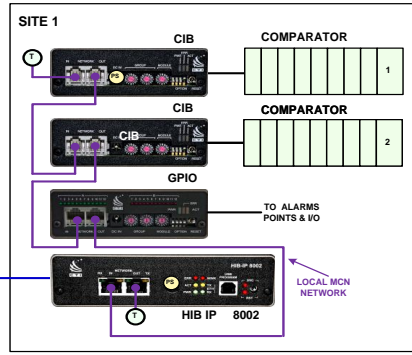
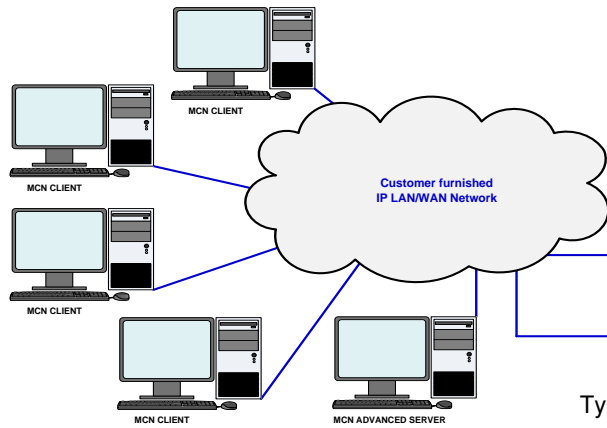
fax
+1.513.595.5983

e-mail
info@ctiproducts.com

www.ctiproducts.com

MCN™ Advanced Server

MCNRCD AS 2017-07



Typical MCN Advanced Server System with HIB-IP 8002 modules

PC Client Display Overview

The Client PC display features real-time status monitoring and control of the modules on the MCN network. The client display opens a display screen from the server and accepts status updates from it.

Control functions such as Force-Vote or Disable for comparators, Open for doors, or Run/Stop for generators are passed to the server for processing.

Local Display

The server software includes local display & control capability.

Receiver Failure and Error Logging

The MCN Advanced Server software can log receiver failures and other user-defined errors. The error log can aid in diagnosing intermittent receivers or phone lines. Logging can be sent to:

- PC Screen
- Disk
- Printer
- Email

Multiple Network Interfaces

The MCN Advanced Server software can support multiple network interfaces. It can connect to remote networks using the external HIB-232 or HIB-IP 8002 network interface units.

Multiple remote comparator sites can be connected over an IP infrastructure using multiple remote HIB-IP 8002 units.

Complex System Support

The MCN Advanced Server software can work with the full range of MCN modules. MCN Advanced Server software can be used in complex systems with existing EXB network extender modules

| Part Number | Network Interface Included |
|-------------|--|
| S1-61226 | HIB-232 78K (External via RS-232) |
| S1-61856 | HIB-IP 8002 78K (External – via IP) |
| S1-61129 | Additional 4-Pack Client License Add-on Option to MCN Server Software above |
| S2-61164 | Multi-NI-4 Option for MCN Advanced Server adds support for (4) additional remote HIB-IP 8002 units. Purchase HIB-IP 8002 units separately. |

Client Specifications

| | |
|------------------------|--|
| Application type | Native 32 Bit Windows Application |
| Operating Systems | Windows XP, Vista, 7, 10, Server 2008 (32 or 64 Bit) |
| PC Requirements (min.) | Pentium 4, 2GHz, 2GB RAM, appropriate IP network card, CD, and HDD |

Advanced Server Specifications

| | |
|--|--|
| Application type | Native 32 Bit Windows Application |
| Operating Systems | Windows XP, Vista, 7,10, Server 2008 (32 or 64 Bit) |
| PC Requirements (min.) | Pentium 4, 2 GHz, 2 GB RAM, CD, HDD, 100Base-T NIC |
| MCN Network Interfaces Supported | HIB-IP 8002 78 Kb/s Standard HIB-232 78 Kb/s |
| Multiple Comparator Site Support | Yes, with remote HIB-IP 8002 units over IP channels |
| Clients Supported: | Base system: 4 Expandable to 64 with additional Client Packs |
| Multiple Network Interface Support software capability | Base system: 4 Expandable to 64 with additional Network Interface Support Packs Purchase additional external Network Interfaces as required. |
| Transport Protocol | UDP-IP Unicast and UDP-IP Multicast (to Clients) |
| Number of MCN I/O Modules monitored | With HIB-IP 8002: 16 per HIB-IP 8002 module System total: 1024 or more |
| Maximum receivers or I/O points per window | Over 400, depending upon screen resolution and length of names |
| Receiver Names, Channel Titles & Display Grid | User-configurable |
| Status Messages & Colors | User-configurable |