



MCN Server 8000™ for Motorola Solutions IP Comparators

MCNRC Remote Comparator Display - McnDemo					
File Edit View Help					
Police Fire EMS Service					
East Police		Central Police		West Police	
Indian Hill Rx	Williamson Rd.	Miami Heights	Indian Hill	Indian Hill	Indian Hill
Williamson Rd. Vote	Engineers	Calhoun Hall Rx	Williamson Rd	Comm Center	Comm Center
Glendale W.T. Rx	Greenhills	Cheviot Rx	Glendale W.T.	Loveland W.T.	Loveland W.T.
Comm Center Rx	Glendale W.T.	Comm Center Rx	Comm Center	Sweetwine	Sweetwine
Loveland W.T. Rx	Calhoun Hall	Mt. Echo Rx	Loveland W.T.	Greenhills Tx	Greenhills Tx
Sweetwine Rx	Comm Center	Miami WW Rx	Sweetwine	Engineers	Engineers
Anderson Twp		Greenhills Vote	Anderson Twp.	Calhoun Hall	Calhoun Hall
Greenhills Rx		Cleves	Greenhills	Miami Heights	Miami Heights
Engineers Rx		Fernald	Engineers	Miami WW	Miami WW
Milford		Prov. Hosp. Rx	Milford	Cleves	Cleves
Mariemont		Mt. St. Joseph Rx	Mariemont	Miamitown	Miamitown
Calhoun Hall		Engineers	Calhoun Hall Rx	Harrison	Harrison
		Miamitown Fail	Miami Heights Rx		
		Harrison	Cheviot Rx		
			Mt. Echo Rx		
			Miami WW Vote		
			Cleves		
East Tx		Microwave		Generators	
Indian Hill On	Indian Hill Normal	Comm Center Normal	Comm Center Normal	Prov. Hosp. Rx	Prov. Hosp. Rx
Comm Center	Sweetwine Standby	Indian Hill Normal	Indian Hill Normal	Mt. St. Joseph Rx	Mt. St. Joseph Rx
		Miami Hts Normal	Miami Hts Normal	Miamitown Rx	Miamitown Rx
		Sweetwine Run	Sweetwine Run	Harrison Rx	Harrison Rx
		Miami WW Normal	Miami WW Normal		
		Calhoun Hall Normal	Calhoun Hall Normal		

Introduction

The MCN (Monitoring and Control Network) Server 8000™ enables monitoring and control of receiver voting systems from a PC over IP network. Support is provided for the following Motorola Solutions IP comparators:

- GCM 8000 Digital Comparator
- MLC 8000 Analog Comparator
- Mixed Mode voting systems using a combination of the above

The MCN Server 8000 processes status messages (Vote, Receive, Disable, Fail) messages from the comparators and passes them to the client displays on the IP network. The display screens can be user-defined with various numbers of rows and columns and a number of tabs. Multiple screens can be defined for different users. (Police Dispatch, Fire Dispatch, Technicians) Individual client PCs can be limited to specific screens if desired.

The MCN Server 8000 also accepts control commands (Force-Vote, Disable) from the remote clients and sends them to the comparators.

The MCN Server 8000 supports multiple clients, and may be located remotely from the comparator equipment.

System Configuration

Common system configuration information (Receiver names, Module addresses, channel information, display screen configuration, output functions, etc.) resides in the MCN Server 8000 and is user-configured with the MCNConfig Server 8000 program.

Remote (Client) Display

The Client PC display features real-time status monitoring and control of the modules on the MCN network. The client display opens a display screen from the server and accepts status updates from it.

Control functions such as Force-Vote or Disable for comparators are passed to the server for processing.

Local (Server) Display

The Server software includes local display and control capability.

Receiver Failure and Error Logging

The MCNRC Server software can log receiver failures and other user-defined errors. The error log can aid in diagnosing intermittent receivers or phone lines. Logging can be sent to:

- PC Screen
- Disk
- Printer

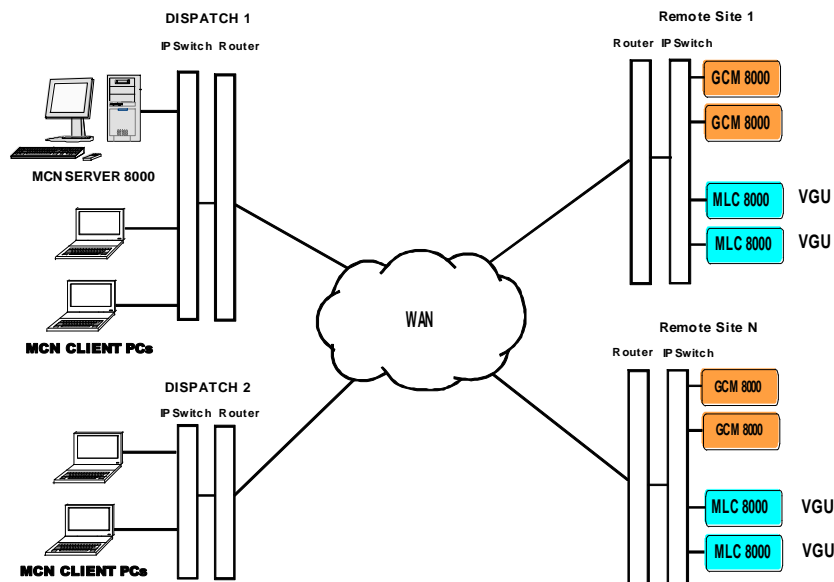
CTI Products, Inc.
1211 West Sharon Road
Cincinnati, Ohio 45240
USA

phone
+1.513.595.5900

fax
+1.513.595.5983

e-mail
info@ctiproducts.com

www.ctiproducts.com



Advanced Server Specifications

Application type	Native 32 Bit Windows Application
Operating Systems	Windows XP, Vista, or 7, Windows Server 2003, 2005, or 2008R2
PC Requirements (min.)	Xeon Dual-Core, 2 GHz, 2GB Memory, CD ROM Drive, Open USB 2.0 Port, 100Base-T Port, Color Monitor
Clients Supported	Base system: 4 Expandable to 64 with additional Client Packs
Comparators Supported	Base system: 4 Expandable to 64 with additional Comparator Support Packs. Note: Mixed Mode systems use two comparators.
Transport Protocol	UDP-IP Unicast and UDP-IP Multicast (to Clients)
Support for Legacy MCN Interfaces	With S2-61164 option: HIB-IP Version 110 or higher, HIB-232 Version 200 or higher
Maximum receivers or I/O points per window	Over 400, depending upon screen resolution and length of names
Receiver Names, Channel Titles, and Display Grid	User configurable
Status Messages and Colors	User Configurable

Client Specifications

Application type	Native 32 Bit Windows Application
Operating Systems	Windows XP, Vista, or 7, Windows Server 2003, 2005, or 2008R2
PC Requirements (min.)	Xeon Dual-Core, 2 GHz, 2GB Memory, CD ROM Drive, Open USB 2.0 Port, 100Base-T Port, Color Monitor

Ordering

Motorola Part #	CTI Part #	Description
DDN1289	S1-61594	MCN Server 8000 Software License for 4 Motorola IP Comparators & 4 Clients
DDN1287	S1-61595	MCN Server 8000 Software License for 1 Additional Motorola GCM 8000 or MCL 8000 Comparator
DDN1288	S1-61596	MCN Server 8000 Software License for 4 Additional Motorola GCM 8000 or MCL 8000 Comparators
DDN1295	S1-61129	MCN Software License Option - Client Expansion for 4 Additional Clients
DDN1294	S2-61164	MCN Software License Option – Multi-NI-4 Adds Support for 4 HIB-IPs
DDN1290	S2-61600	MCN Server 8000 Manual