

RadioPro™ IP Gateway



Radio-over-IP Solutions for PCs and iOS™/Android™

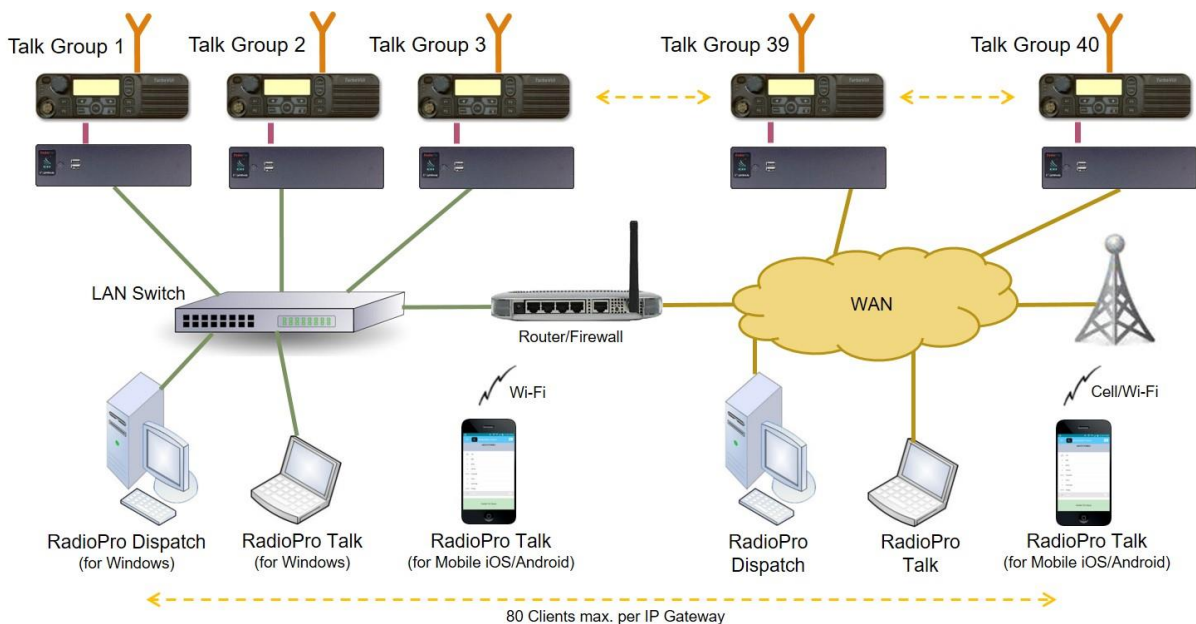
RadioPro™ products offer best-in-class RoIP and DoIP (Dispatch over IP) solutions for 2-way radio systems, such as Motorola MOTOTRBO™ or Kenwood NEXEDGE®. They allow communications from anywhere using PC Windows® or iOS/Android mobile platforms. RadioPro™ products combine flexibility to solve any Radio-over-IP challenge, ease of system deployment, and cost savings over other solutions. RadioPro™ systems can provide Voice, GPS/AVL, Text Messaging, Logging, and Telemetry in a single solution.



The RadioPro™ IP Gateway interfaces a control station radio to an IP network for easy wide-area deployment without purchasing and configuring server PCs. It provides full functionality when connected to Motorola MOTOTRBO or Kenwood NEXEDGE radio systems.



As shown in the diagram below, a RadioPro system may have a mixture of client types; Dispatch, Talk, and Mobile.



RadioPro™ IP Gateway

Specifications	
Mechanical and Environmental	
Dimensions & Weight	8.25" w x 2.5" h x 11.5" d, 3 lbs.
Temperature & Humidity	0-50 degrees C, 10-95% non-condensing
Electrical	
AC Input (with included power adapter)	100-240Vac, 200mA max, 50-60Hz
DC Input	11.5 – 12.5 VDC, 2A max
Miscellaneous	
Motorola MOTOTRBO XPR4k/5k Interface	DE-9 female (analog Tx/Rx), USB (data). Use cable S2-61431.
Kenwood NEXEDGE NX700/800 Interface	DB-25 female. Use cable S2-61769.
Kenwood NEXEDGE NX720/820 Interface	DA-15 female. Use cable S2-61890.
Kenwood NEXEDGE NX5700/5800 Interface	DB-25 female. Use cable S2-61769.
Tx/Rx Impedance	600 ohms
Maximum Clients Supported	80
Power-on	Auto
Network Bandwidth	2.2kBytes/s with audio compression enabled (22kBytes/s without)
Port Forwarding (for firewall/router)	Configurable, default port is TCP Port 48222
Warranty	2 Years

Ordering Information for Control Station Interface	
S2-61815	RadioPro™ IP Gateway Kit for Control Station Includes power supply. One required for each talk group (control station interface) .
Interface Cables	
S2-61431	RadioPro™ Interface Cable for Motorola MOTOTRBO XPR4550/XPR5550 radio
S2-61769	RadioPro™ Interface Cable for Kenwood NEXEDGE NX-700/800 and NX-5700/5800 radio
S2-61890	RadioPro™ Interface Cable for Kenwood NEXEDGE NX-720/820 radio
License for Solo, Talk, or Talk for Mobile users (number of simultaneous user connections)	
S2-61480-005	5-pack License for Solo, Talk, and Talk for Mobile users
S2-61480-010	10-pack License for Solo, Talk, and Talk for Mobile users
S2-61480-020	20-pack License for Solo, Talk, and Talk for Mobile users
S2-61480-040	40-pack License for Solo, Talk, and Talk for Mobile users
S2-61480-080	80-pack License for Solo, Talk, and Talk for Mobile users
Gateway Options	
S2-61850	RTP Transfer Option for Eventide recorders: transfers voice, text, & GPS data using RTP
S2-61851	MultiSpeak Transfer Option for 3 rd party utility outage software: transfers GPS data
S2-61852	Persistent Patch Option: no other software is required to patch 2 to 5 channels
S2-61887	GPS Locate Option for Talk Mobile App (for iOS and Android devices)

Notes

Motorola XPR4550/5550 or Kenwood NX-700/800/720/820/5700/5800 control station radio should be supplied by radio dealer.

Dispatch console PC, microphone, PTT accessories, and desk speakers should be supplied by dealer or end-user.

Product options and specifications are subject to change without notice.



CTI Products, Inc. www.ctiproducts.com sales@ctiproducts.com +1 513-595-5900

RadioPro, RadioPro Dispatch, RadioPro Talk and RadioPro Solo are trademarks of CTI Products, Inc.
MOTOROLA, MOTO, MOTOROLA SOLUTIONS, and the Stylized M Logo are registered trademarks of Motorola Trademark Holdings, LLC and are used under license.
All other trademarks are the property of their respective owners.

5/16/2018