

# RadioPro Dispatch



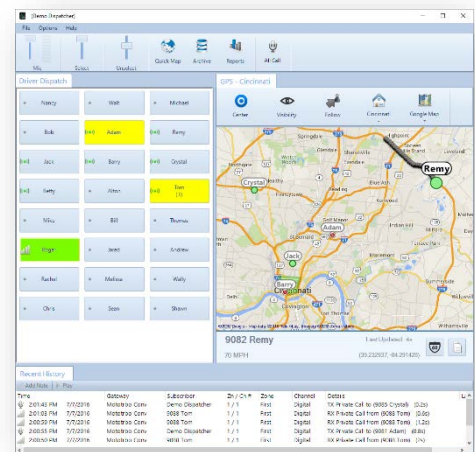
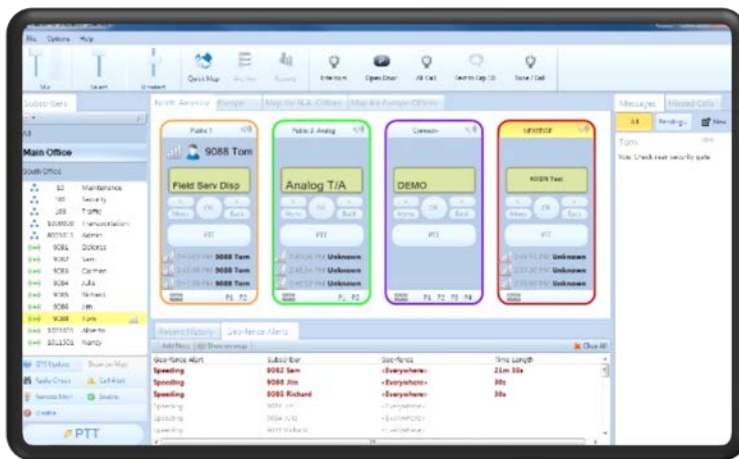
## Computer Aided Dispatch over IP

RadioPro Dispatch™ is a software console for Windows® operating systems and optimized for Kenwood NEXEDGE® radio systems. It is an ideal solution for projects requiring communication with multiple simultaneous radio talk groups or analog channels. Multiple RadioPro Dispatch clients and radio users may be centrally located or scattered among various locations connected by an IP network (see diagram next page). A Dispatch console may be configured to include *GPS Mapping*, *Voice Dispatch*, Text Messaging, and *Telemetry* modules. Standard features include *History Logging with Voice Playback and Archive Search*. RadioPro Dispatch is designed with an intuitive user interface to minimize learning time and to maximize a user's efficiency.



RadioPro Dispatch systems include client software, RadioPro IP Gateway hardware, and one-time licensing. Besides RadioPro Dispatch, systems may also utilize RadioPro Solo™ and Talk™ for PCs and laptops as well as RadioPro Talk for Mobile™ for Android and iOS devices. A host of accessories are available to implement an enterprise solution. These approved devices include desk microphones, headsets, footswitches, and touch screens – all with Push-to-Talk capabilities.

## New Subscriber Grid Layout



RadioPro Dispatch is the most feature-rich dispatch console product for 2-way radio systems, with the following elements:

- **Voice Dispatching** with:  
40 simultaneous Talk Groups, Cross-Muting, Patching, Multi-Select with Select/Unselect Audio, Custom Action Buttons (for All-Call, All-Text, and All-Emergency), new Subscriber Grid Layout
- **History Logging** with Voice Playback and GPS Locations
- **Text Messaging**
- **GPS Mapping (AVL)** with:  
Address Lookup, Place Markers, Named Areas, Street View, Multiple Maps, Show/Hide Subscribers, Zoom to Visible Subscribers, Geo-fences, Off-line Maps, Location Presets, Image Overlays
- **Telemetry** for IP-based or radio I/O

Download RadioPro Dispatch demo software from our website:

[http://ctiproducts.com/RadioPro\\_DemoDownloads.html](http://ctiproducts.com/RadioPro_DemoDownloads.html)

# RadioPro Dispatch

## New Subscriber Grid Layout

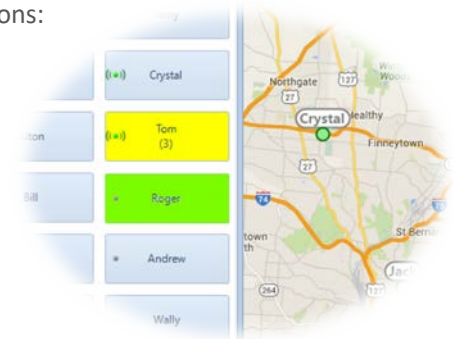
Use the new Subscriber Grid Layout to see the status of your entire fleet at once. (See images on previous page and below.) This layout is perfect for many fleet dispatching applications, especially taxi and limo services. The cells for each subscriber will provide the following status and actions:

### Status

- Available/Unavailable
- Missed Call (yellow and # of calls)
- Receiving (green)
- Transmitting (red)
- Emergency (Icon)

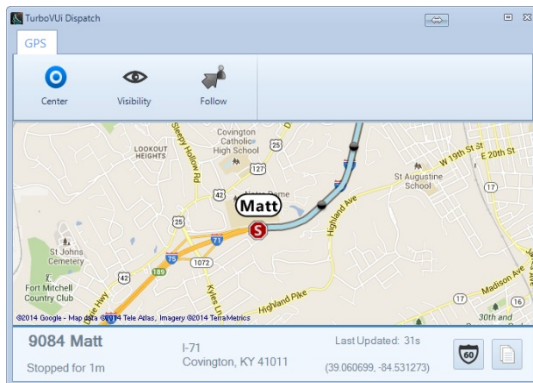
### Actions

- Show on Map
- Call
- Call Alert
- Radio Check
- Replay Audio

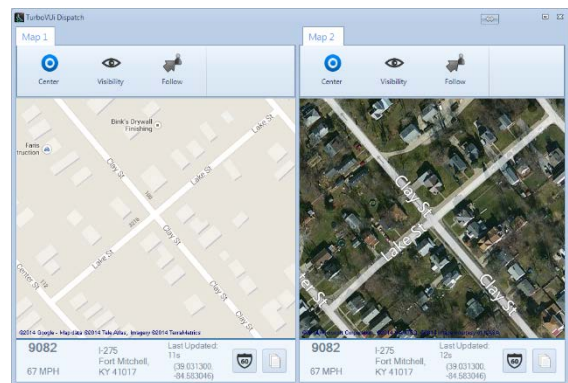


## AVL/GPS Mapping Features

### Subscriber Icons



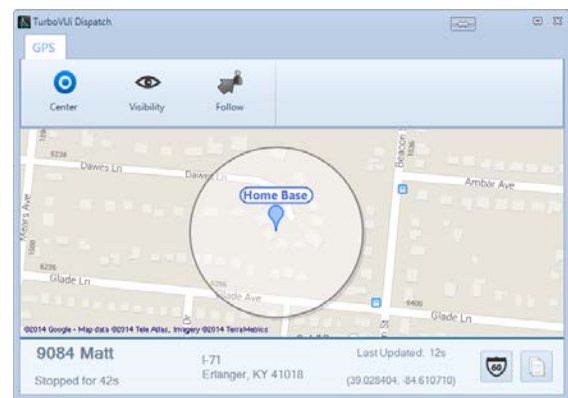
### Multiple Maps



### Street View



### Place Markers



# RadioPro Dispatch

## RadioPro Dispatch Features

<b><i>Voice Features</i></b>
Simultaneous Talk Groups
Private and Group Calls
Radio ID Alias Names
Cross-muting
Select & Unselect Volume
Multi-select
Tx VU Meter
Subscriber Grouping
Subscriber Sort & Search
All-call, All-text, All-emergency
Radio Check
Call Alert to Subscriber
Remote Monitor
Remote Disable/Enable
Custom Action Buttons
Voice Logging and Playback
Patching
Pre-canned Audio Messages
Tone before Voice
Missed Call Tracker
Fast Channel-Audio-Isolate
Auto Un-mute during Emergency
Emergency Call-back Button
Subscriber Grid Layout (New)

<b><i>AVL/GPS Features</i></b>
Map Services: Google, Bing, Open Street, Yahoo
Place Markers with Show/hide
Named Areas
Street View
Multiple Maps
Show/hide Subscribers
Zoom to Visible Subscribers
Stopped/moving Status Icons
Trail Crumbs with STR Technology
Map Location Presets
Follow Subscriber
Image Overlays
Telemetry Support using Tallysman TW200 Modules
Telemetry Support using Advantech Adam IP Modules
Geo-fences for Polygons & Routes
Geo-fence Conditions: Enter, Exit, Speeding, Time
Email and Text Alerts for Geo-fence Violations
Reports for Stopped Times, Distance, etc.
Emergency Location Indicator
Subscriber Status: ID/Alias, Speed, Address, Last Update
Copy Subscriber Status to Clipboard

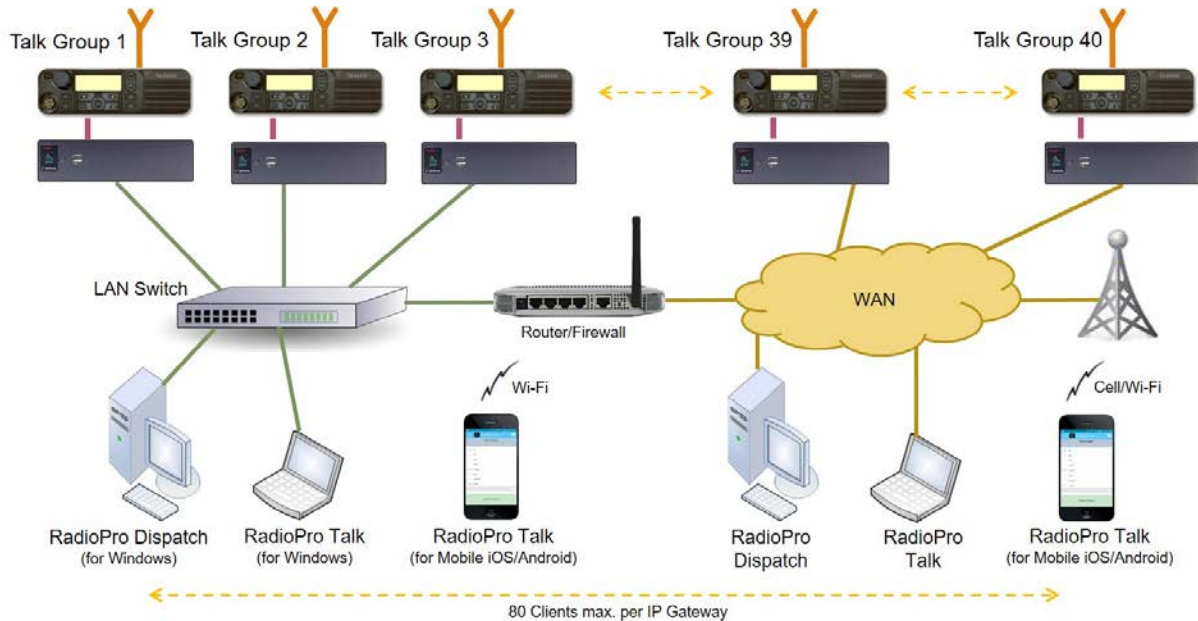
<b><i>Text Messaging Features</i></b>
Grouped by Conversation
Send to Multiple Subscribers or Groups
Delay Sending
Message Status: Complete, Fail, Pending
Conversation View or Message View

<b><i>Telemetry Remote I/O</i></b>
Radio-based with Tallysman TW200 modules
Store-and-forward for GPS data
Send GPS location on events
IP-based with Advantech Adam modules
Control and monitor door access

# RadioPro Dispatch

## RadioPro System

As shown in the diagram below, a RadioPro system may have a mixture of client types; Dispatcher, Talk, and Mobile. The IP Gateways interface the radio system to an IP network, ensuring easy wide-area deployment without purchasing and configuring server PCs.



Ordering Information	
S1-61770	RadioPro Dispatcher Core Required for each Dispatcher client. Includes Event & Voice Logger, and Archive Viewer.
S1-61771	RadioPro Dispatch Voice Module Optional. Can be ordered with 1 to 40 Talk Groups.
S1-61772	RadioPro Dispatch GPS Module Optional.
S1-61773	RadioPro Dispatch Telemetry Module Optional.
S1-61774	RadioPro Dispatch Text Messaging Module Optional.
S2-61815	RadioPro IP Gateway Kit One required for each talk group. Includes power supply. Order radio interface cable separately. (See ordering instructions for RadioPro IP Gateway.)
Accessories	See the RadioPro Accessories Catalog

### Notes

Kenwood NX-800 control station radio should be supplied by radio dealer.

Dispatcher console PC, microphone, PTT accessories, and desk speakers should be supplied by Dealer or End-user.

